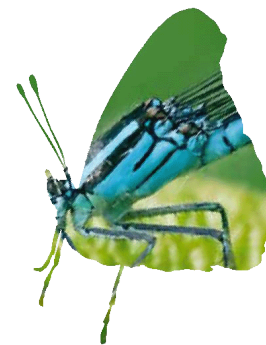


# Reporting under Article 17 of the Habitats Directive

Chris van Swaay

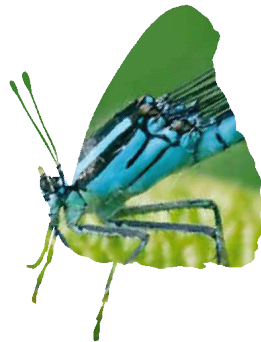
De Vlinderstichting

Butterfly Conservation Europe



# Article 17

- Every six years (2007, 2013, 2019...)
- Standard format
- For all species on Annex II, IV and V
- In all EU countries
- First look back: there is a lot of information available from the previous assessments
- Reporting in 2019: what can you do (and what should you do)?



# Parameters for the conservation status assessment

- Range
- Population
- Habitat for the species
- Future prospects

Reporting under Article 17  
of the Habitats Directive

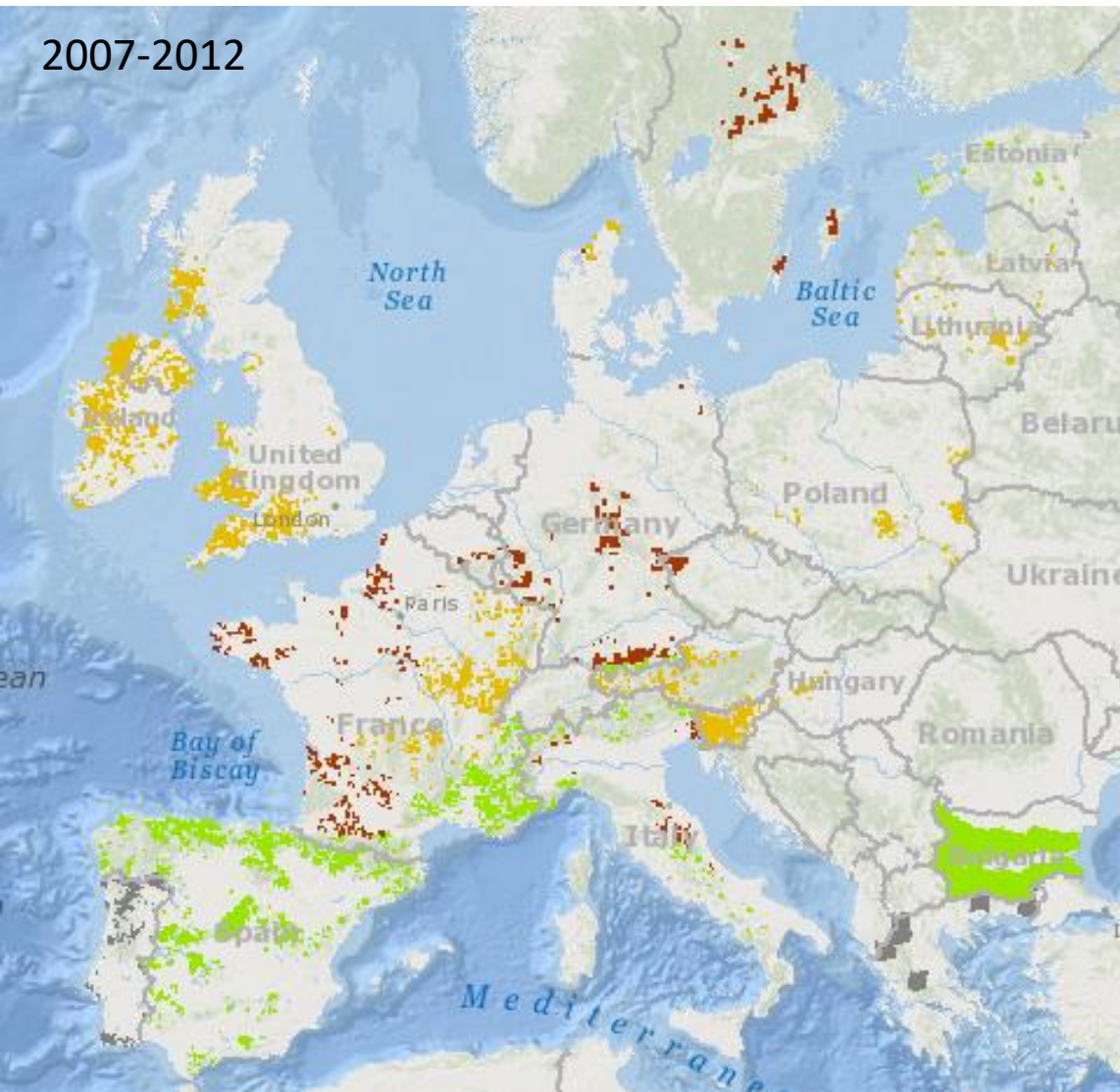


Explanatory Notes and Guidelines  
for the period 2013–2018

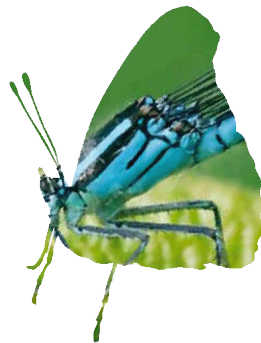
Final version – May 2017

# Range

2007-2012



<https://bd.eionet.europa.eu/article17/reports2012/species/summary/>

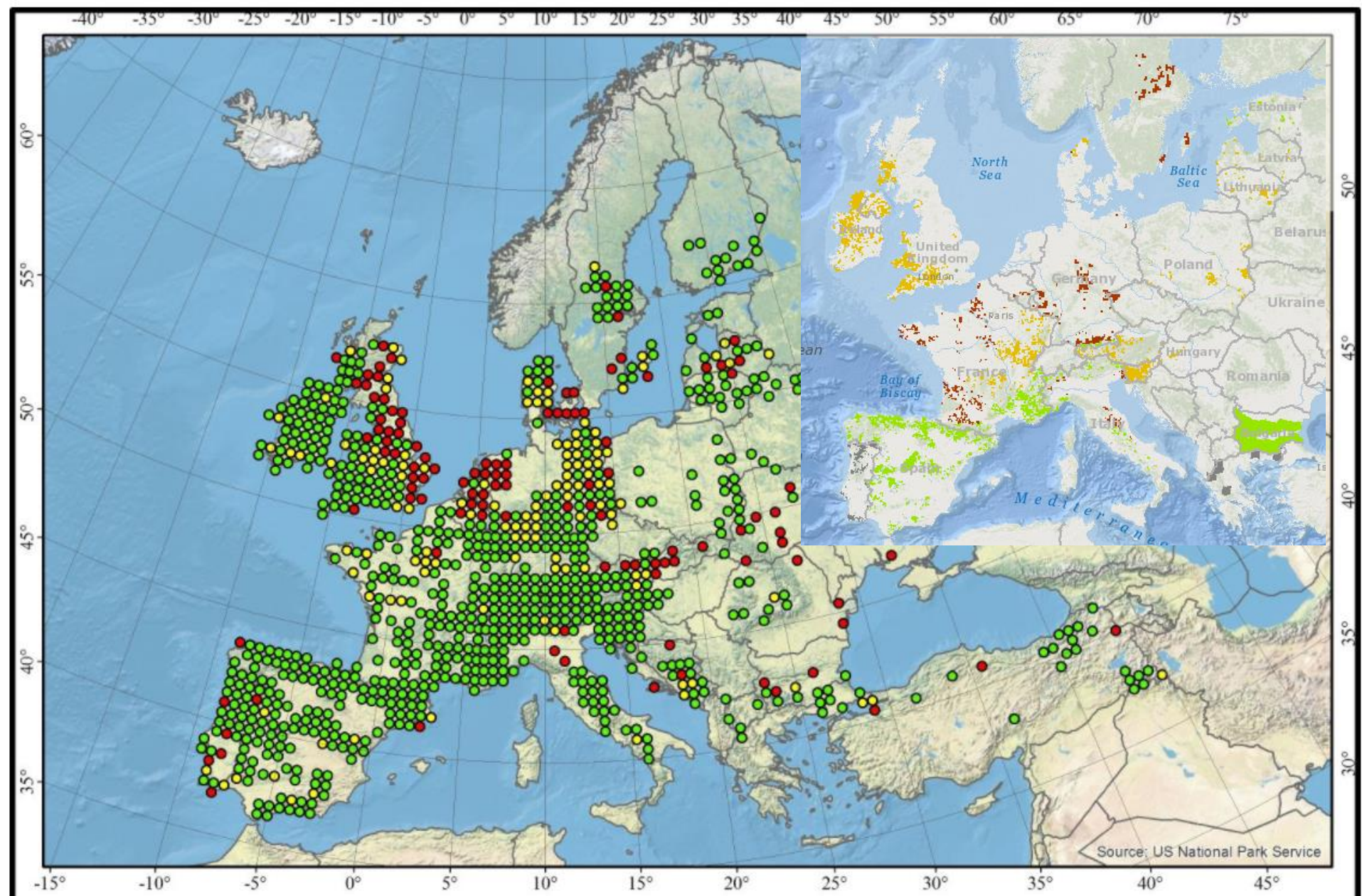


MS	Reg	Range (km <sup>2</sup> )			
		Area	% MS	Trend	Ref.
AT	ALP	14100	10.5	0	>14100
BG	ALP	26400	19.7	x	26400
DE	ALP	3269.51	2.4	0	3269.51
ES	ALP	15193	11.4	x	≈15193



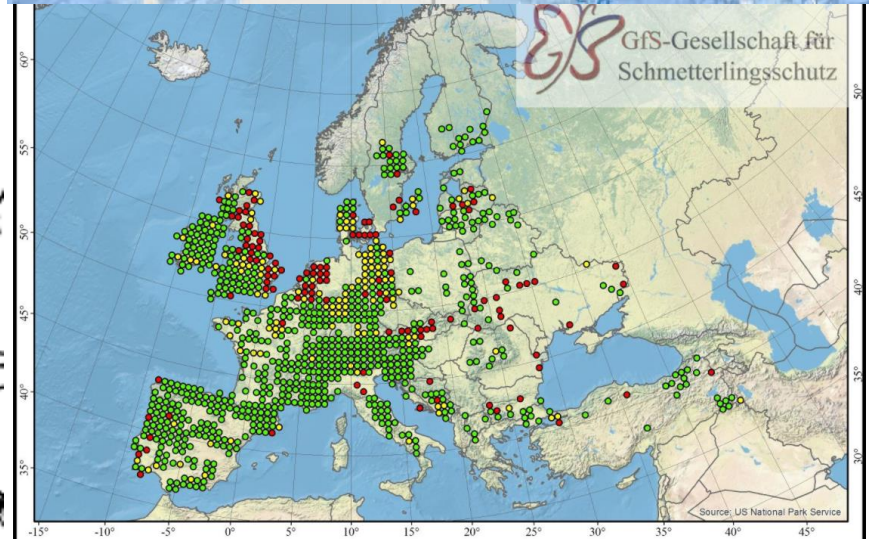
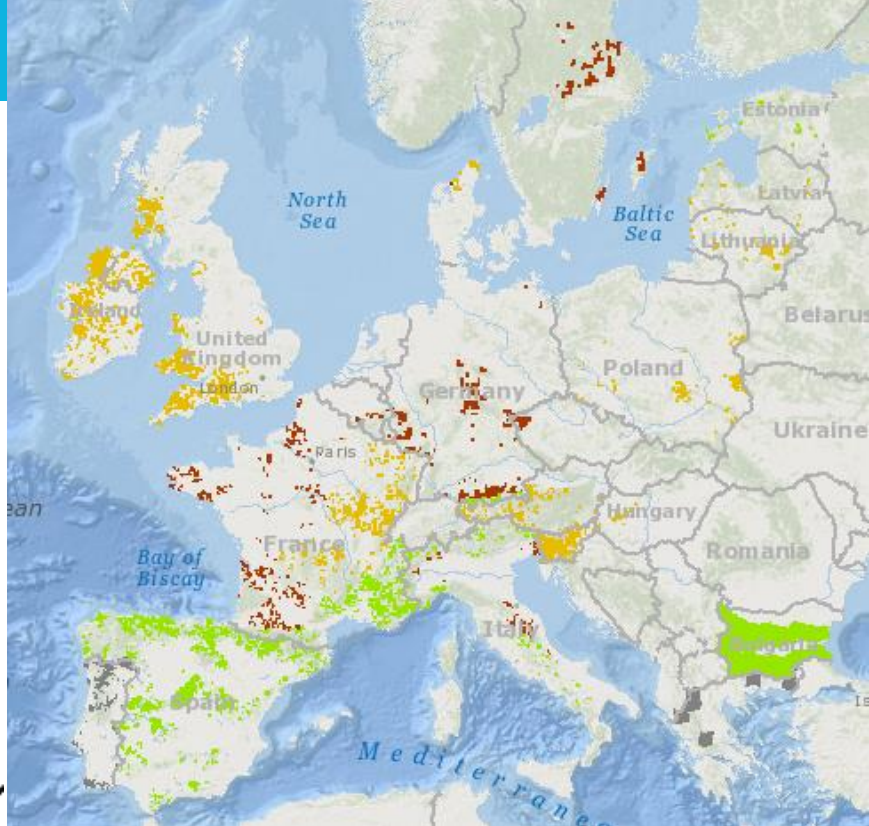
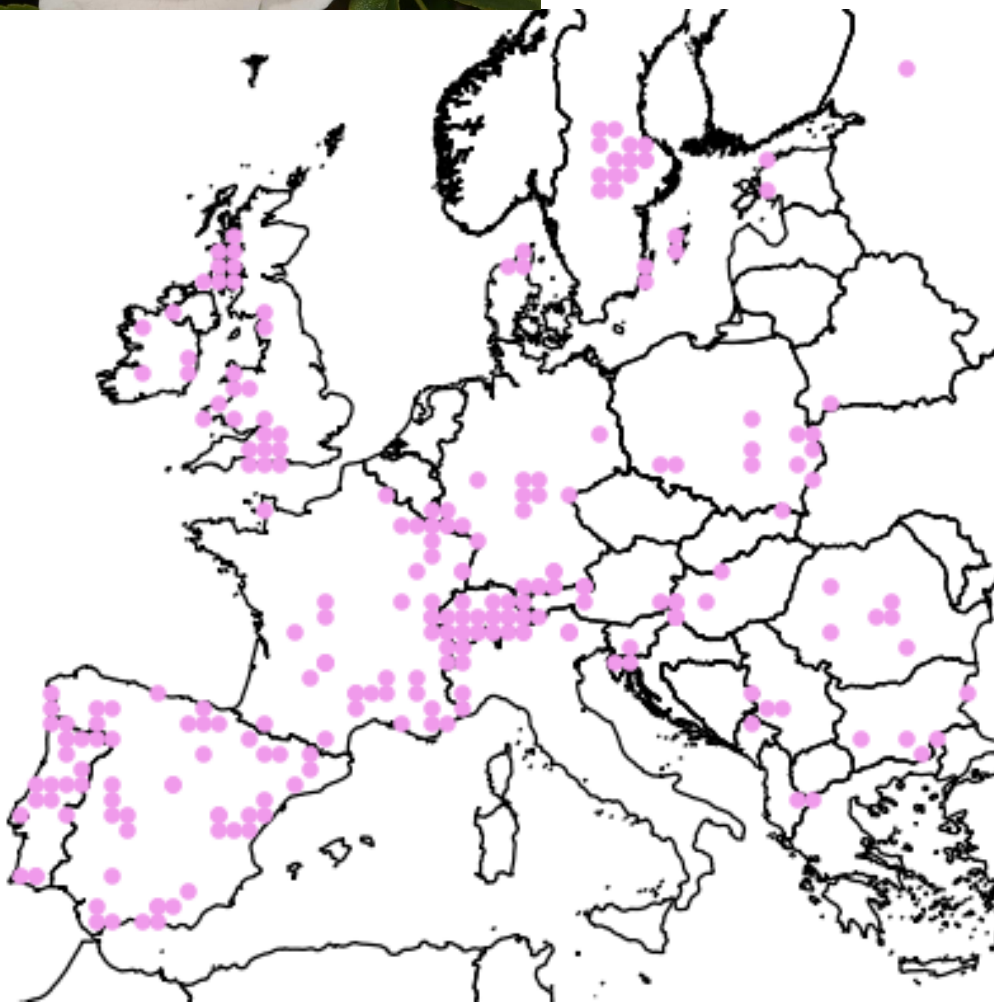
<u>MS/EU27</u>	Reg	Area	<u>Range Concl.</u>	Trend	Ref.
EU27	ALP	133849	2XR		
EU27	ATL	223626	2GD		
EU27	BLS	6500	00	x	6500
EU27	BOR	95965	1	-	>100665
EU27	CON	252183	1		>>262901
EU27	MED	300575	2GD		
EU27	PAN	4347	00	0	≈4347





*Euphydryas aurinia*

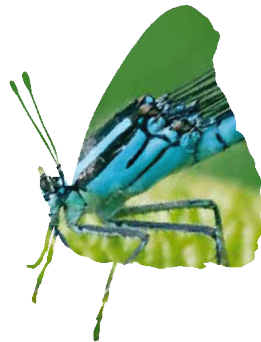




*Euphydryas aurinia*

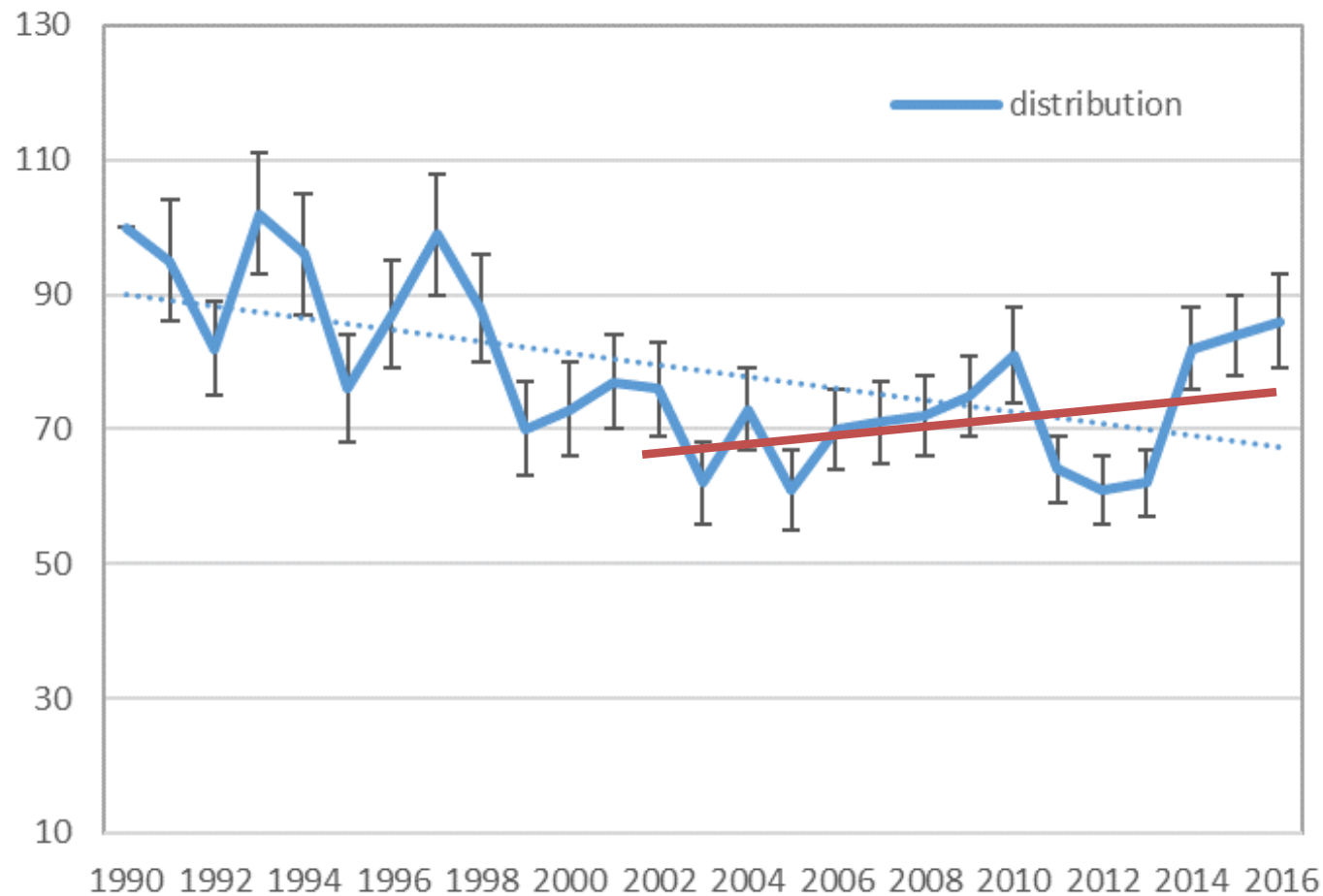
# 2013 Range *E aurinia*

- Period 12 years  
(mostly 2001-2012)
- Range FV in 20 out of 40 combinations of country and biogeographical region
- In EU range is FV in Alpine (133849 km<sup>2</sup>), Black Sea (6500 km<sup>2</sup>) and Pannonian, and Unfavourable in Atlantic (223626 km<sup>2</sup>), Boreal (95965 km<sup>2</sup>), Continental (252183 km<sup>2</sup>), unclear in Mediterranean (300575 km<sup>2</sup>)

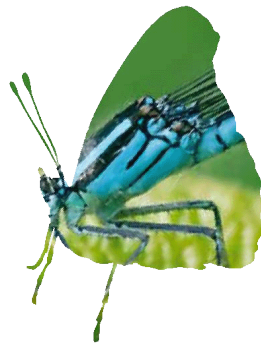




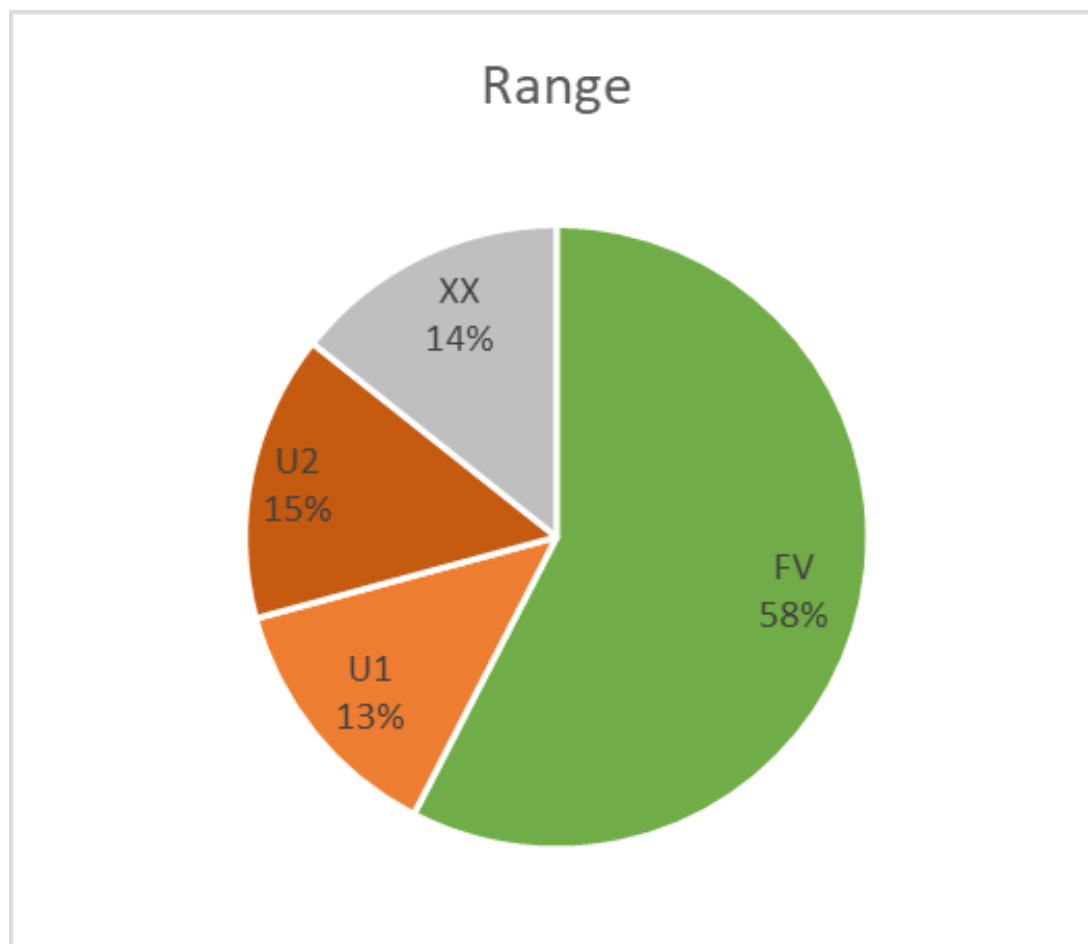
# Distribution trend: 'our' data



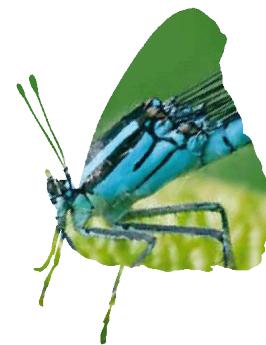
Trend 2001-2012



# 2013 Range butterflies in EU



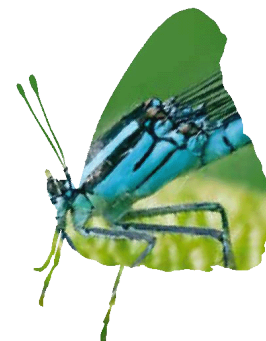
- Range
- Population
- Habitat for the species
- Future prospects



# Population size and trend



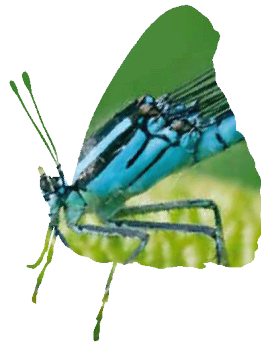
country ▾	region ▾	speciesname ▾	p ▾	populati ▾	populatic ▾	population_trend ▾	population_t ▾
AT	ALP	Euphydryas aurinia				0	2001-2012
AT	CON	Euphydryas aurinia				-	2001-2012
BE	CON	Euphydryas aurinia	i	1000	5000	-	2001-2012
BG	ALP	Euphydryas aurinia	i	46698	91396	x	2001-2012
BG	BLS	Euphydryas aurinia	i	7822	15644	x	2001-2012
BG	CON	Euphydryas aurinia	i	168441	336882	x	2001-2012
CZ	CON	Euphydryas aurinia	i	12000	20000	-	2001-2012
DE	ALP	Euphydryas aurinia	i	5000	10000	0	2000-2012
DE	CON	Euphydryas aurinia	i	5000	100000	-	2000-2012



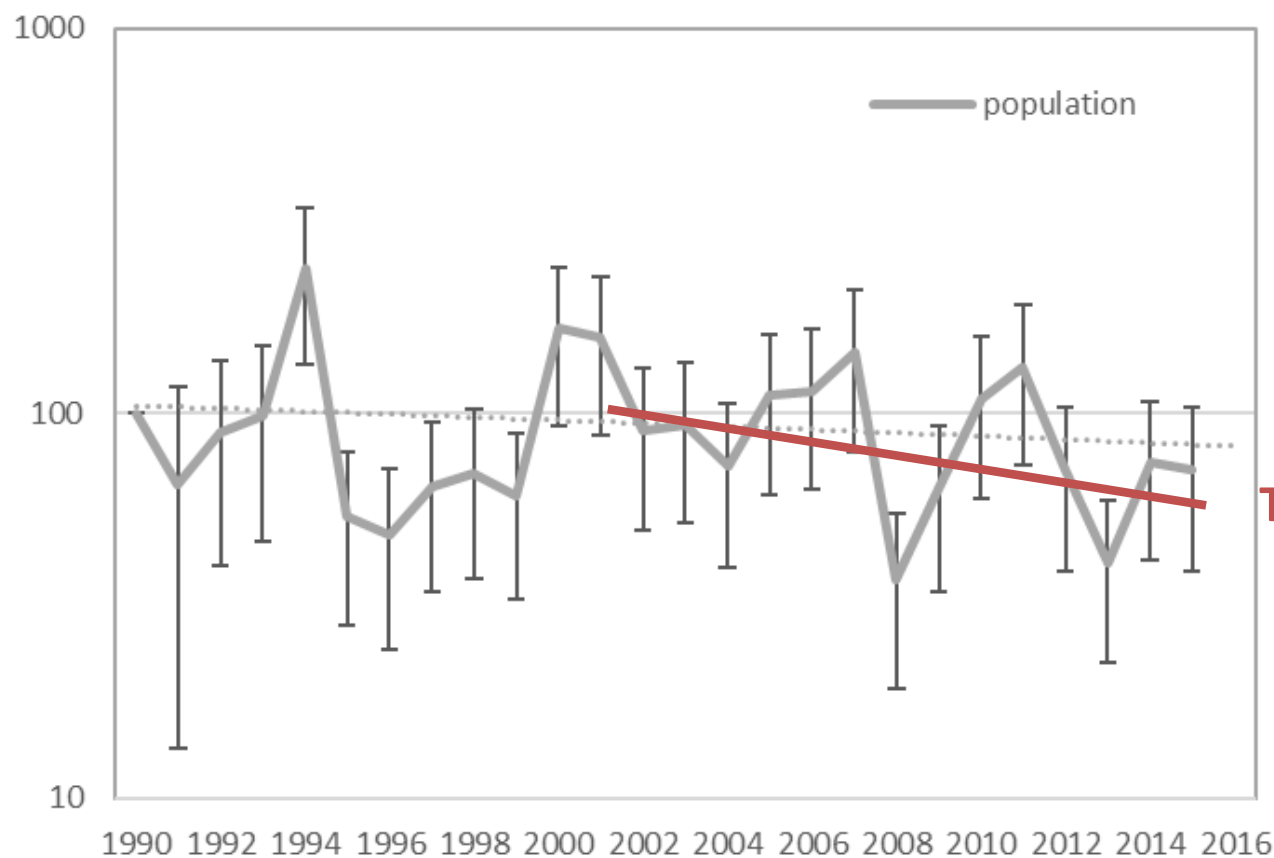


# 2013 Populations *E aurinia*

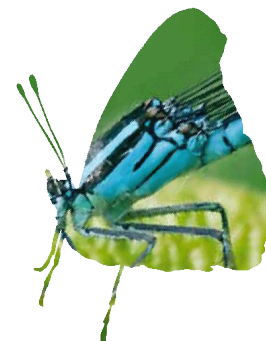
- Populationsize
- Populationtrend



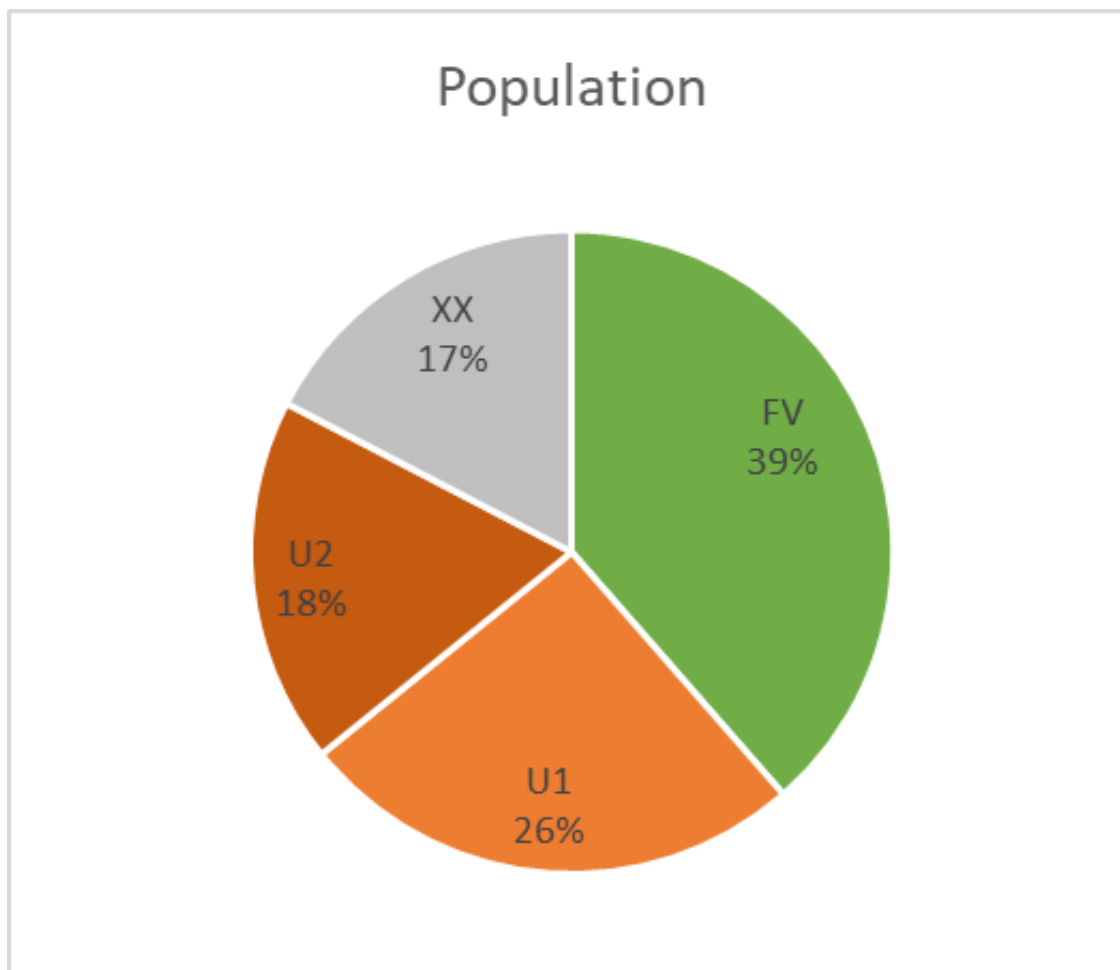
# Population trend from grassland butterfly indicator



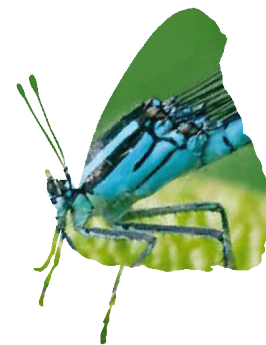
Trend 2001-2012



# 2013 population butterflies in EU

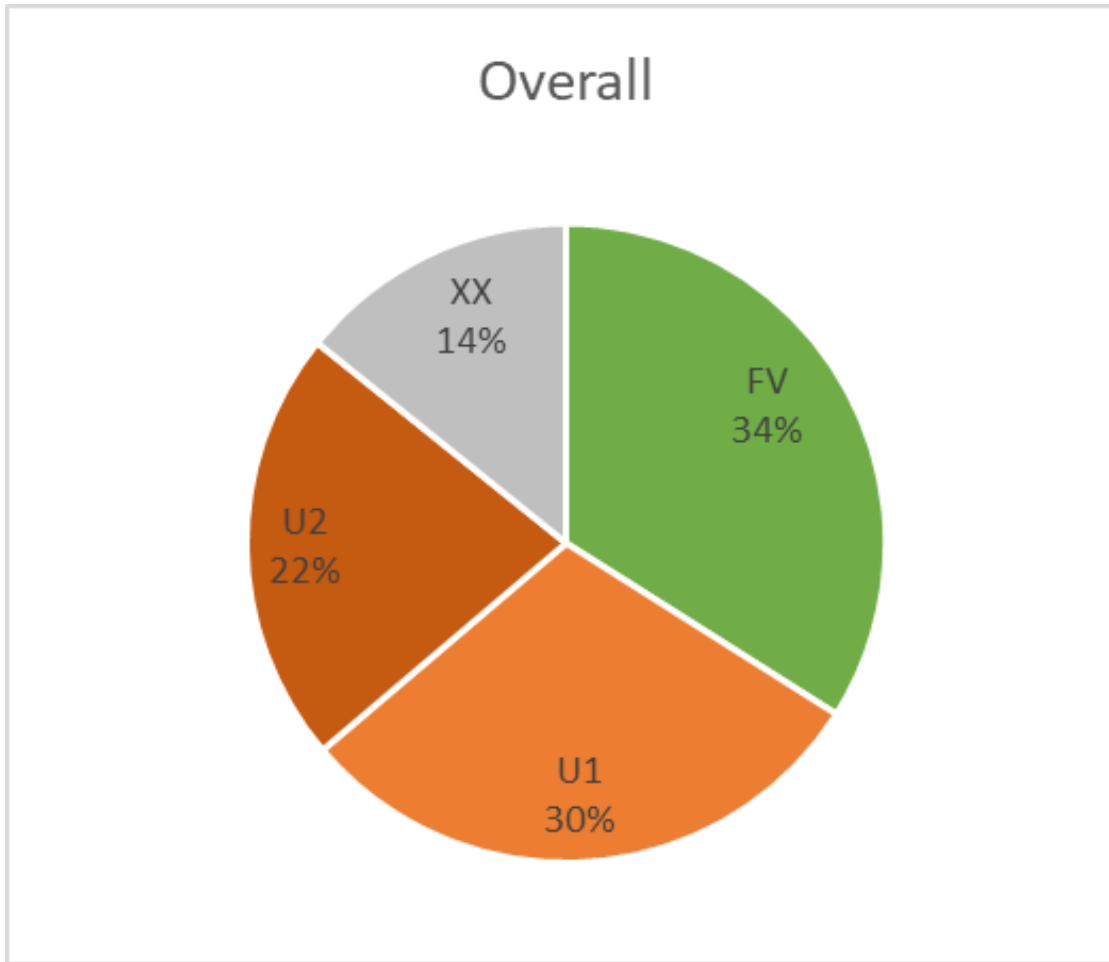


- Range
- Population
- Habitat for the species
- Future prospects

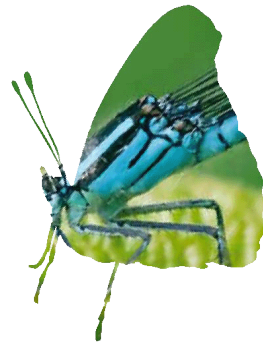




# 2013 overall assessment

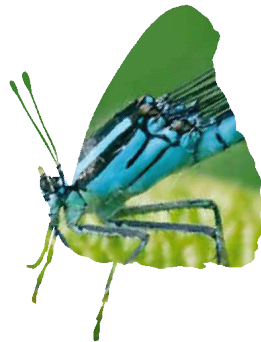


- Range
- Population
- Habitat for the species
- Future prospects



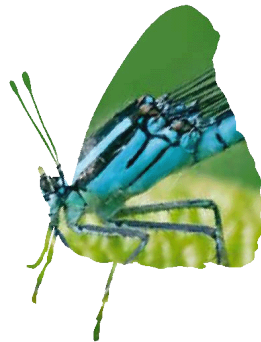
# 2019: next reporting round

- Member state responsibility
- The major monitoring tool for the EU regarding HD species
- So important to point your MS to data and knowledge you have
- Be sure (your) monitoring results are used
- Be sure you have all data on butterflies in your country (e.g. also from online portals and GBIF)



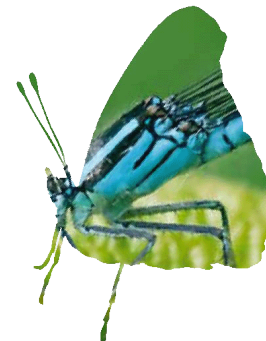
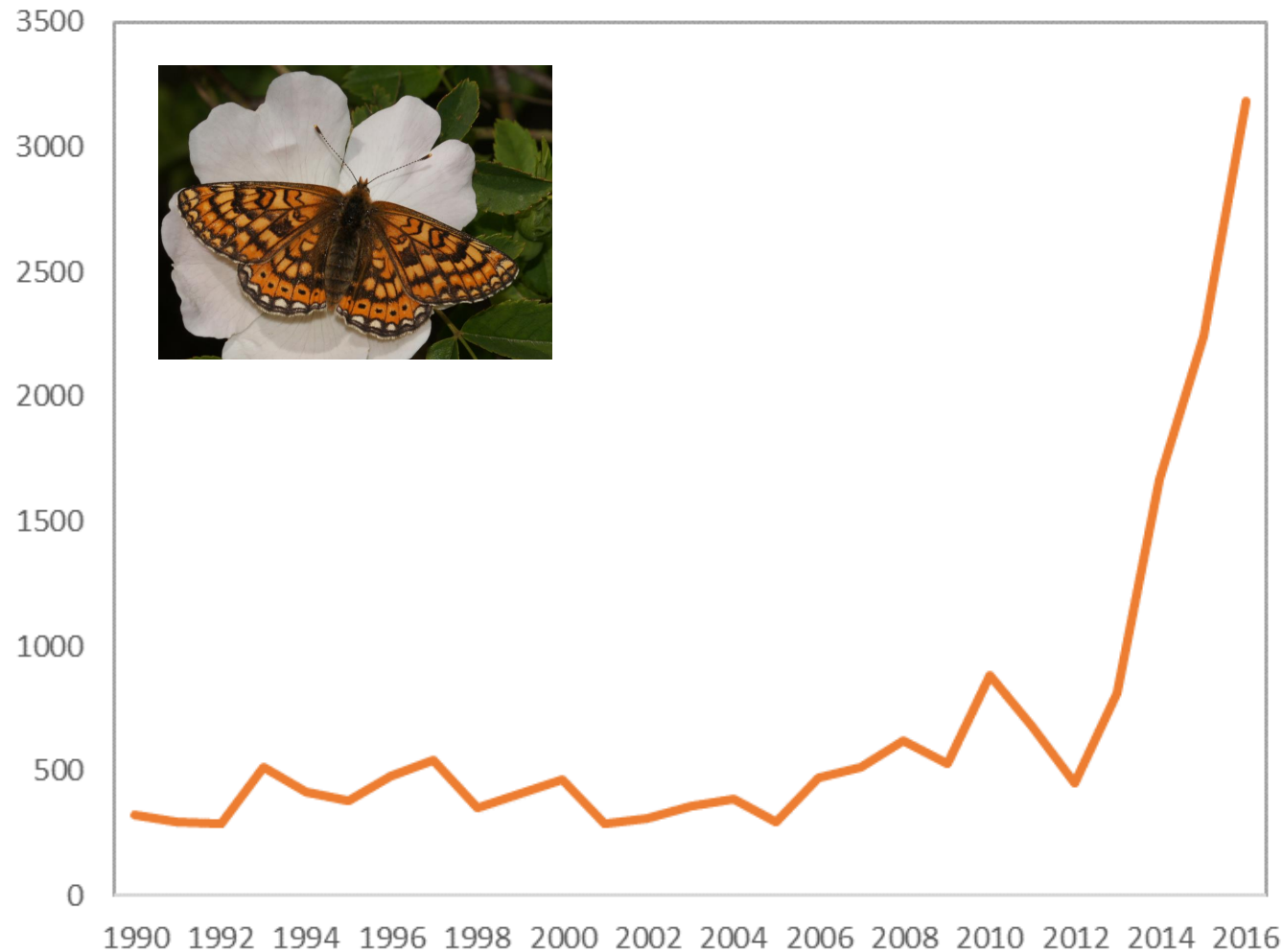
# Data needed by MS

- Distribution data: on 10x10km scale
- Check also what's available on GBIF and iNaturalist
- Distribution trend: a 'simple' comparison of 10km squares in previous vs present period can give very wrong results
- Occupancy trends and 'list-lengths' will be much better, but need data

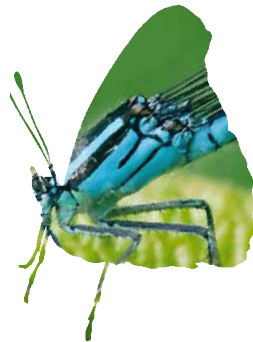
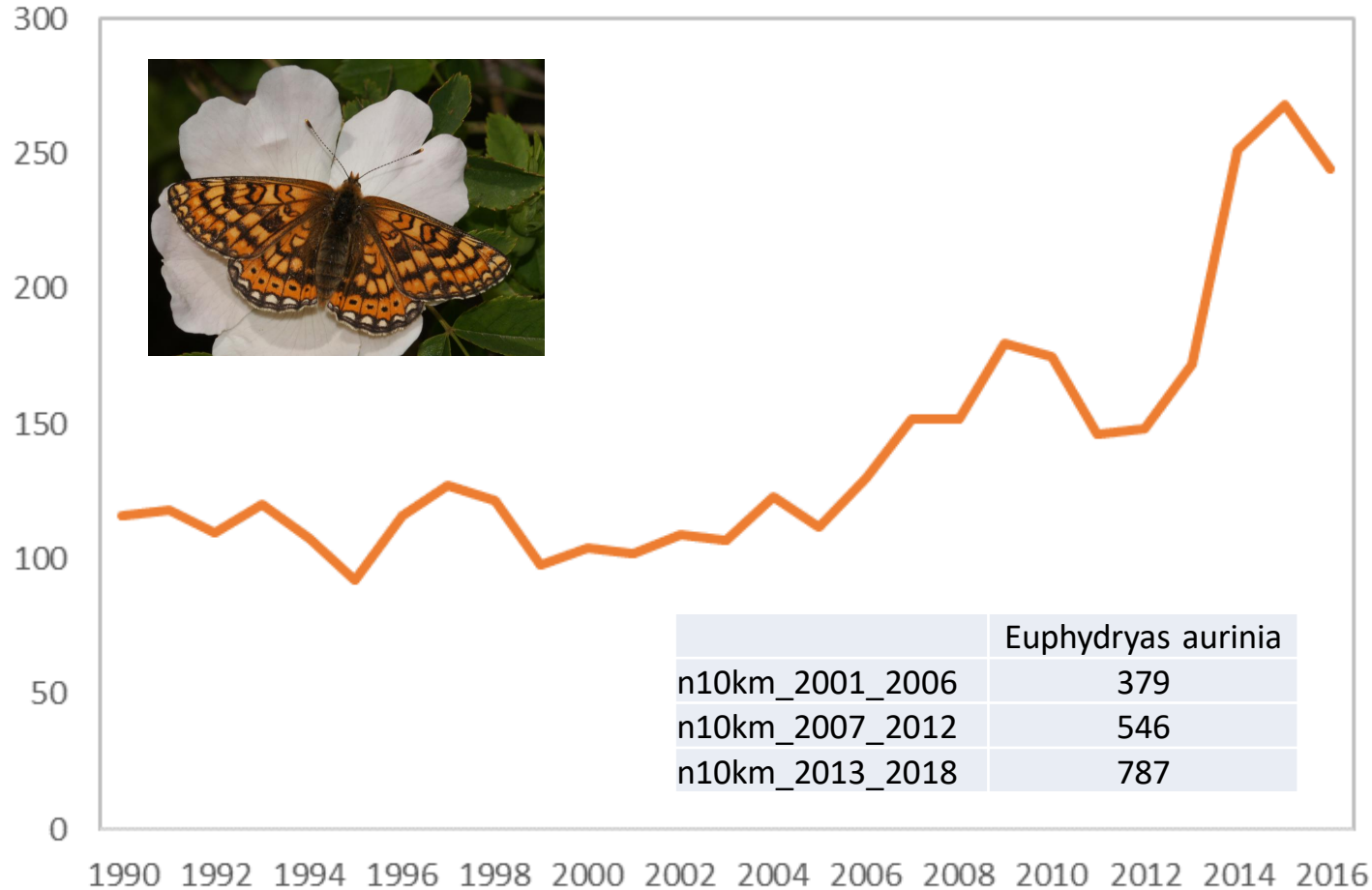




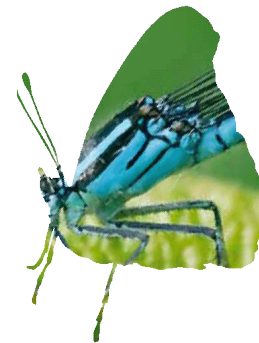
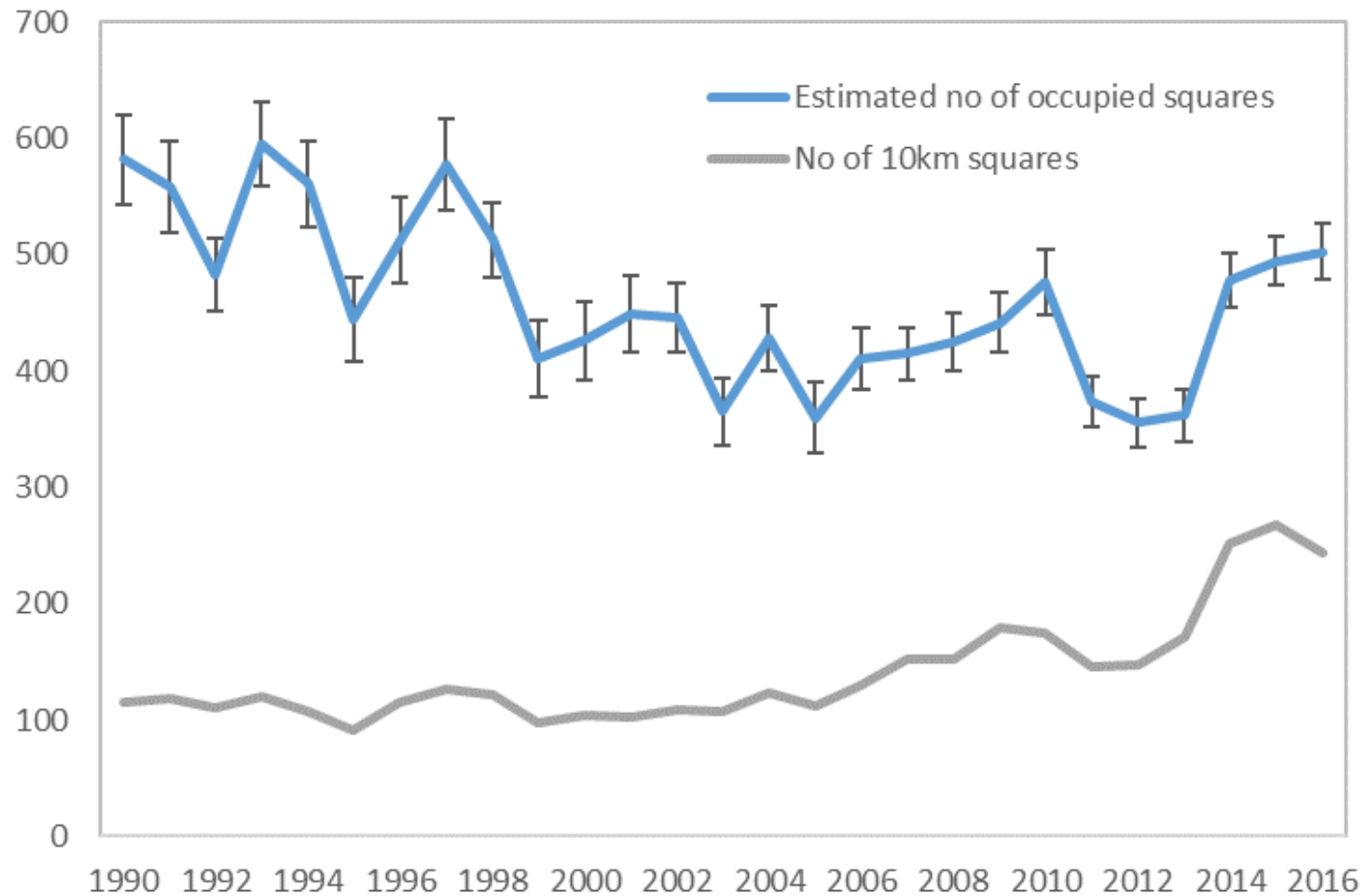
# Number of records per year



# Number of 10km squares per year

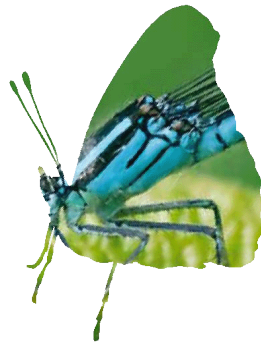


# Number of 10km squares per year



# Data needed by MS

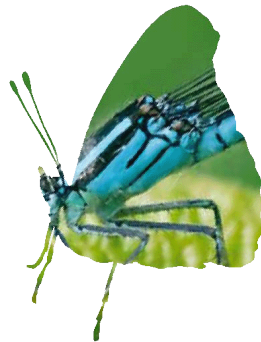
- Population size: 1km grid
- Population trend: use the best available
- BMS data is the best
- If not, occupancy on 1km grid
- If not 'best professional judgement'
- Comparison with previous report not possible (as was in the number of adult butterflies)



# Annex II species

- Overview of conservation measures
- Population size inside the Natura 2000 network
- For butterflies also in 1 km grid

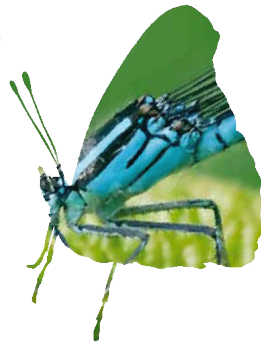
- Range
- Population
- Habitat for the species
- Future prospects





# Other topics

- Habitat for the species (quality and area)
- Pressures and threats
- Future prospects
- These are all points where BCE partners have a great knowledge
- But this is not always known by your MS officials
- So get into contact with them. Most data will be collected in 2018



# Get involved!





**De Vlinderstichting**

Mennonietenweg 10

Postbus 506

6700 AM Wageningen

info@vlinderstichting

**[www.vlinderstichting.nl](http://www.vlinderstichting.nl)**

