

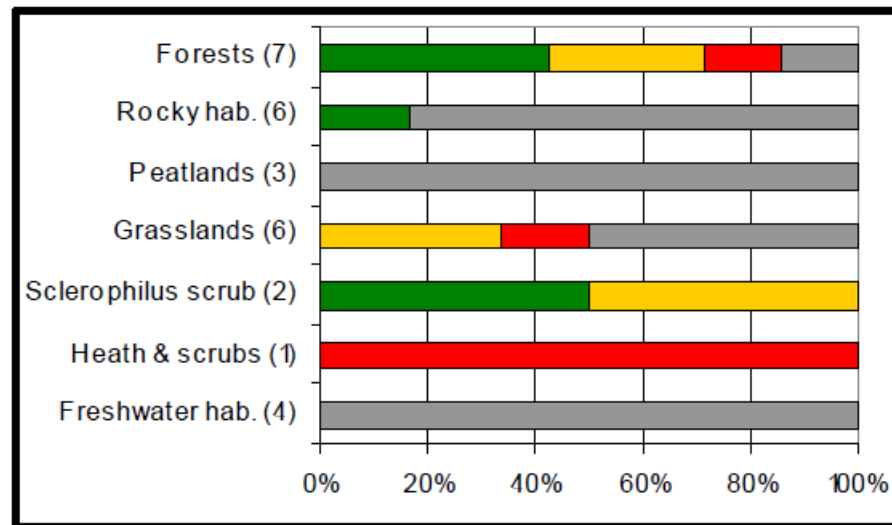
Talking with Member States, to encourage support for eBMS and for more conservation for Lepidoptera Experience for Luxembourg

**eBMS meeting – 02/12/2022 – Laufen
Xavier Mestdagh**

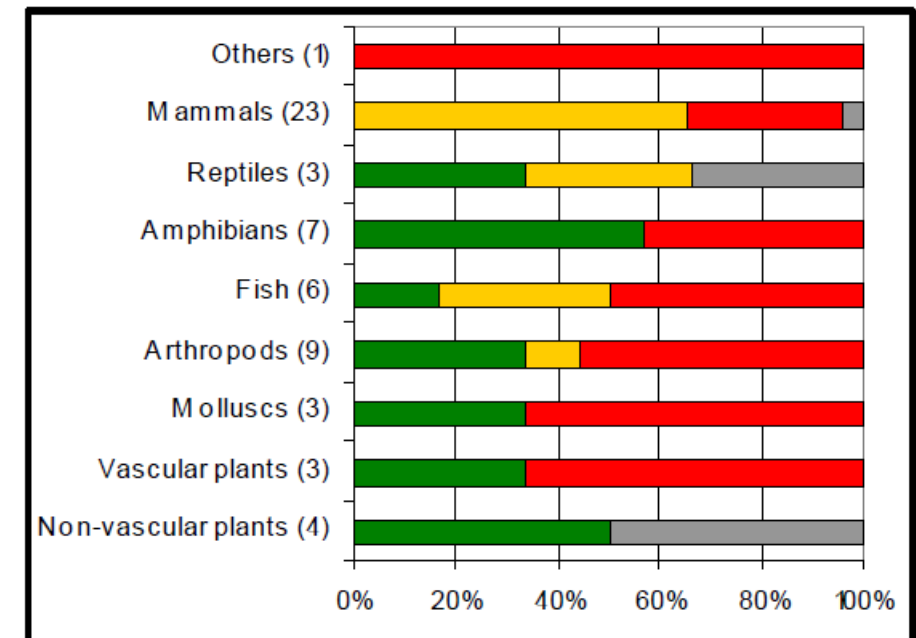
2007: Reporting under art. 17

too many species with unknown conservation status...

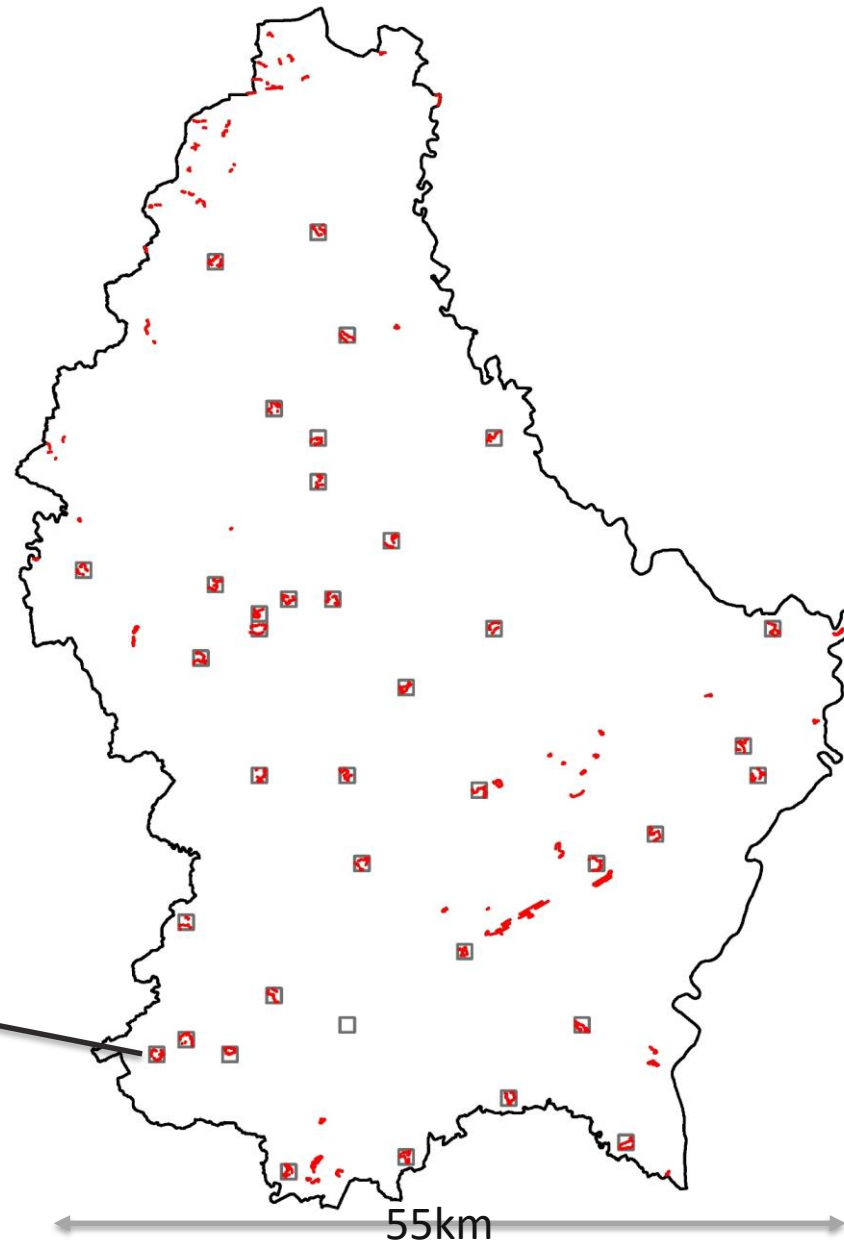
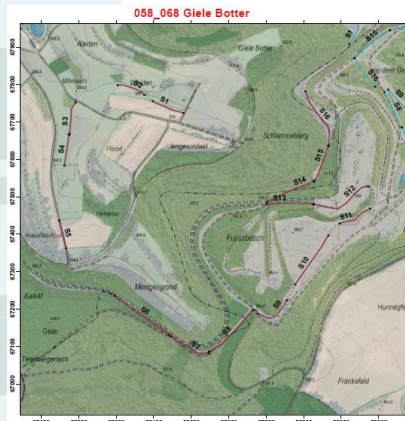
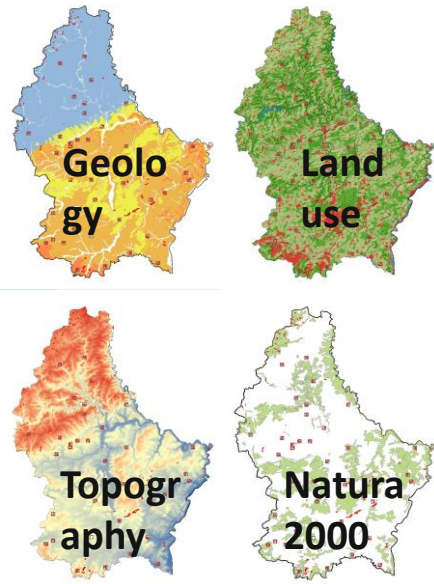
2009: proposition of a national monitoring including randomly selected transects



(yy) = number of occurrences

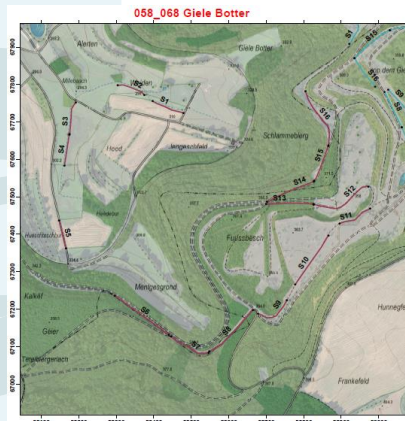
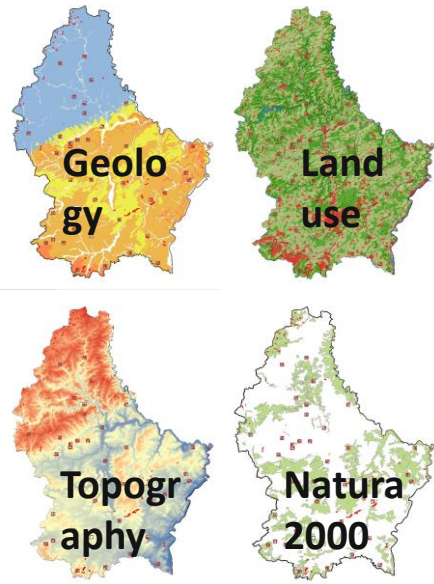


Stratified random sampling; 1km²



Stratified random sampling; 1km²

2016



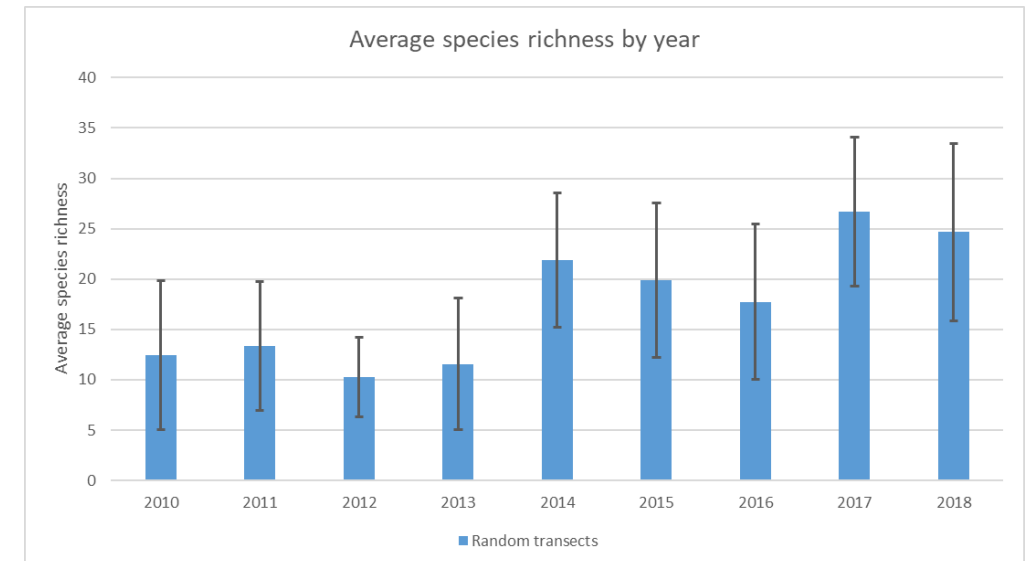
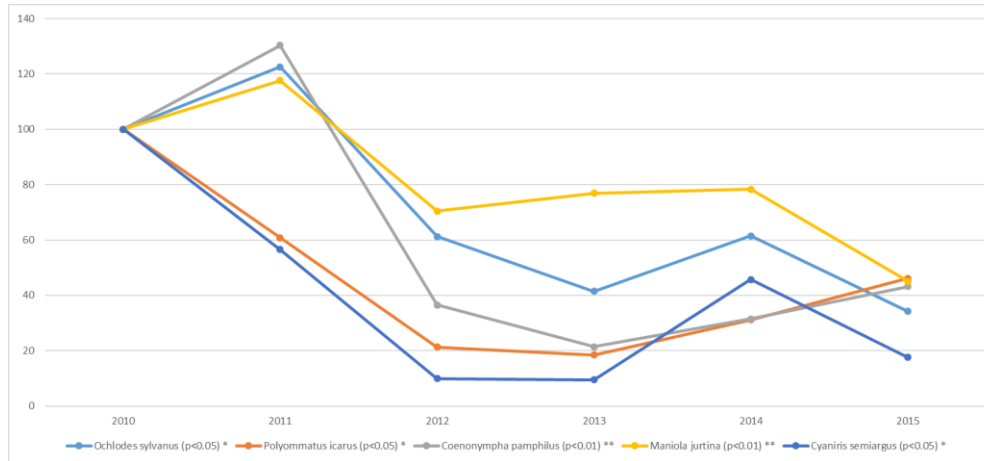
Lycaena helle



E. aurinia

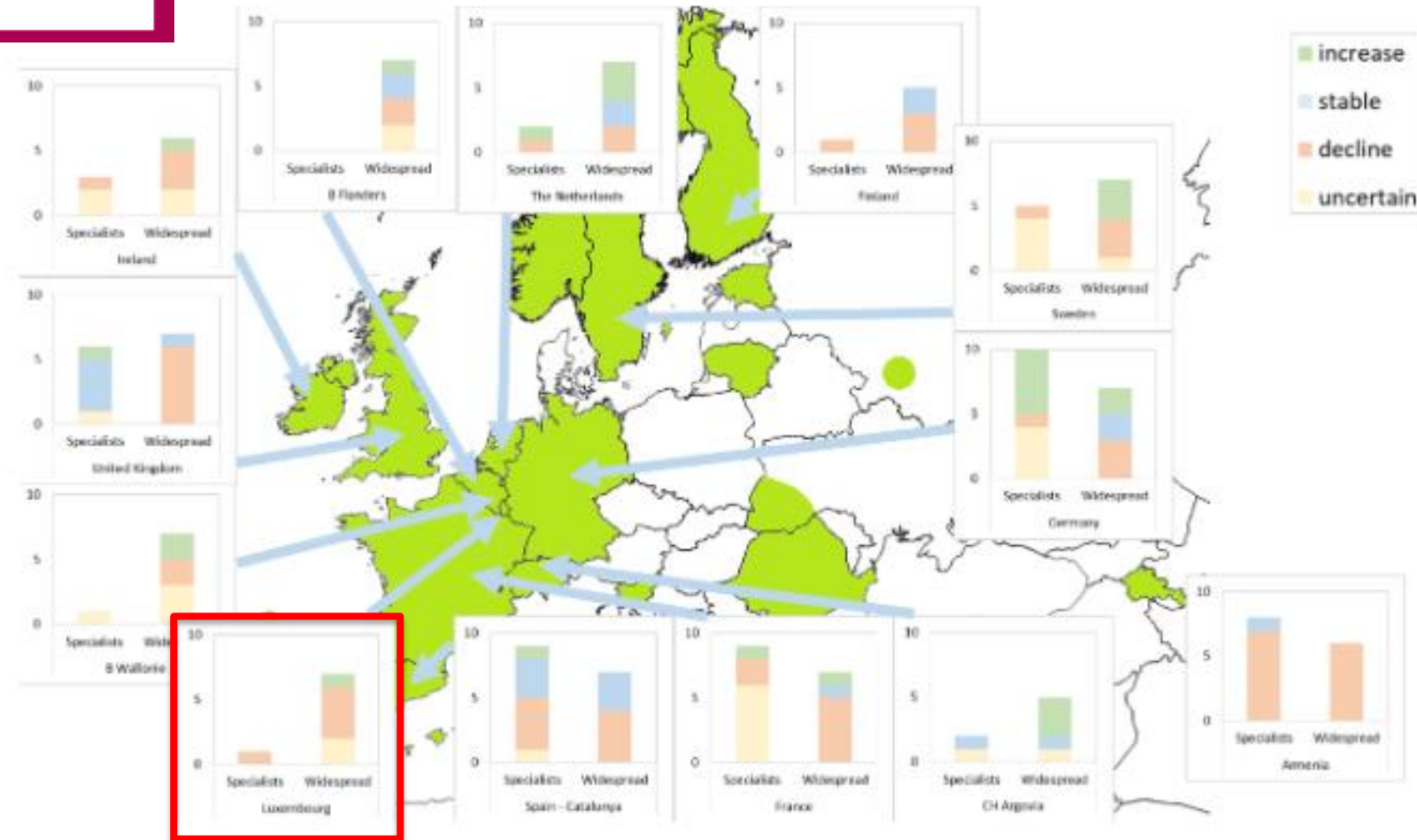
P. arion

- Two meetings/year with ministry of environment
- National conference (2018) “Meet the pollinator”



The European Butterfly Indicator for Grassland species: 1990-2015

Figure 8: The long-term trends of widespread and specialist butterflies per country since the start of the BMS in that country. Only countries with less than half of the species trends as 'uncertain' are presented.



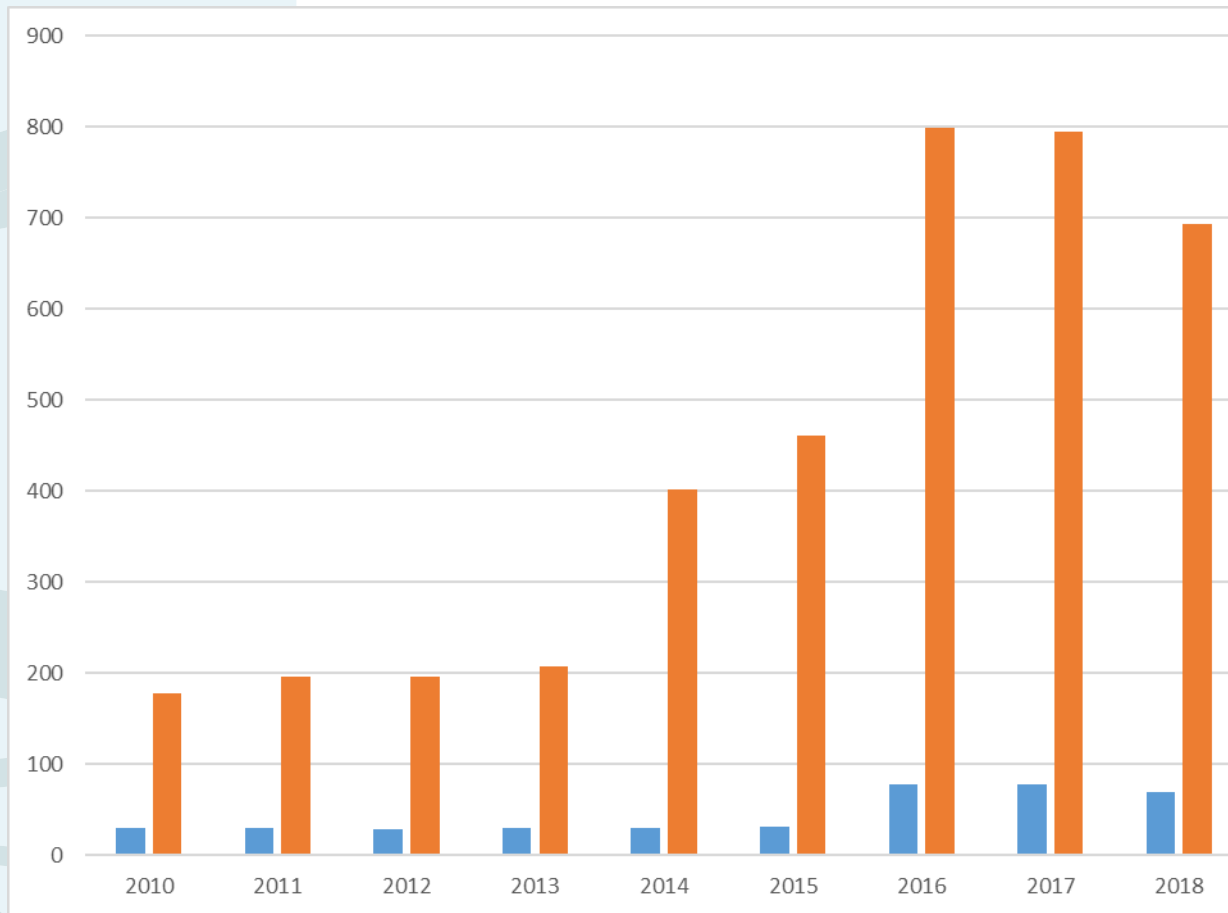
van Swaay et al. 2016

- 2022: launch of BIOLYS project including production of national indicators based on butterfly counts
 - Species abundance trends
 - LU grassland indicator
 - (N2000 vs. common landscapes)

BUTTERFLIES

Monitoring transect outcomes

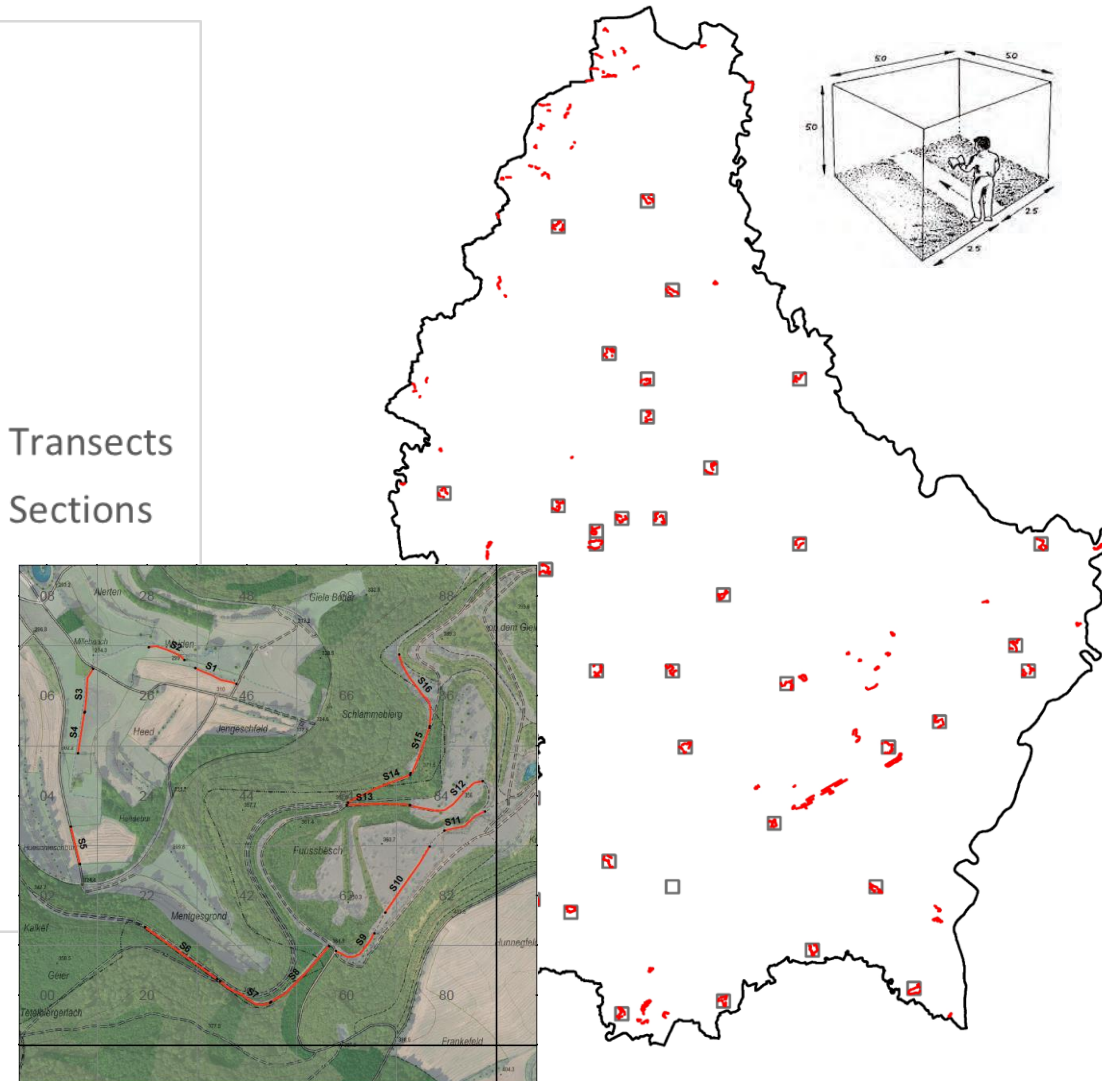
- Transect-based



■ Transects

■ Sections

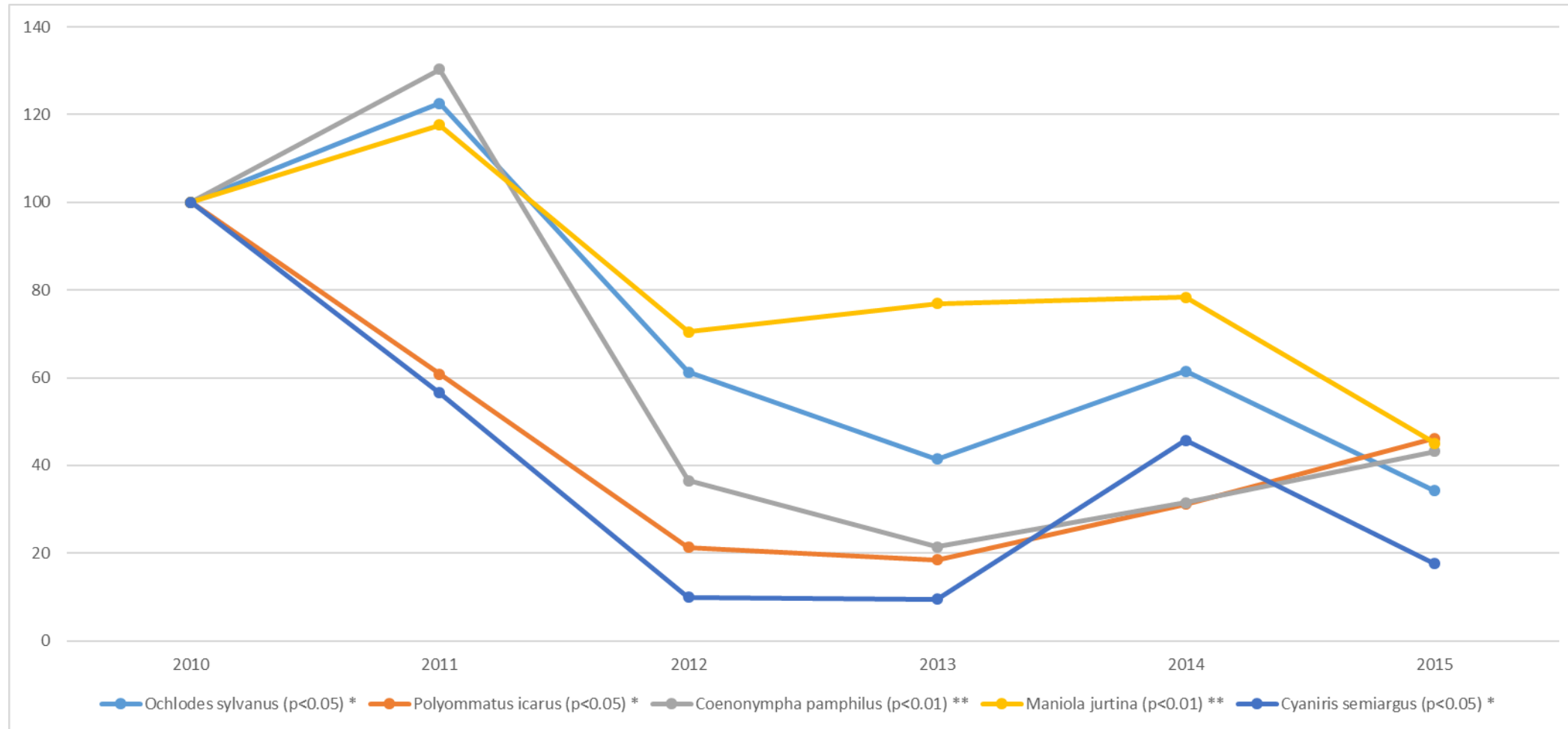
ABUNDANCE



BUTTERFLIES

Monitoring transects: outcomes

- Species abundance trend



Monitoring transects: outcomes

- Species richness

