

Butterfly projects in Sweden

LARS PETTERSSON (LUND) & NILS RYRHOLM (GÄVLE)

@dagfjarilar

<http://dagfjarilar.lu.se>



Overview

- Swedish Butterfly Monitoring Scheme
- Distribution changes
- The EU Habitats Directive in Sweden
 - » Reporting 2013
 - » Targeted monitoring 2014-2019
- The Swedish Red List

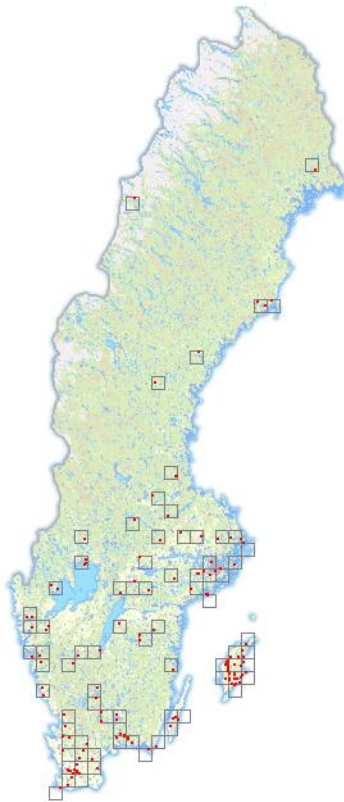


Swedish Butterfly Monitoring Scheme

- Funded by the Swedish EPA as part of their permanent monitoring
- Started 2010
- Volunteer-based
- Free choice of sites
- In 2014:
 - » ca 280 volunteers
 - » ca 390 sites (45 % transects, 55% point sites)
 - » Beddingestrand to Vuollerim (covering 1700 km)



Improved coverage



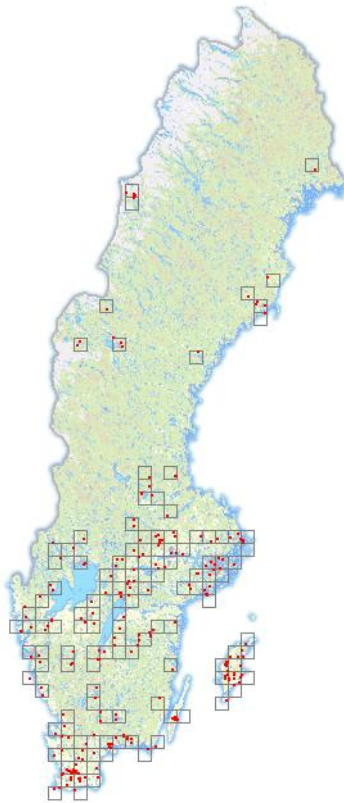
2010

- 29900 butterflies
- 117 volunteers
- 83 species



LUND
UNIVERSITY

Improved coverage

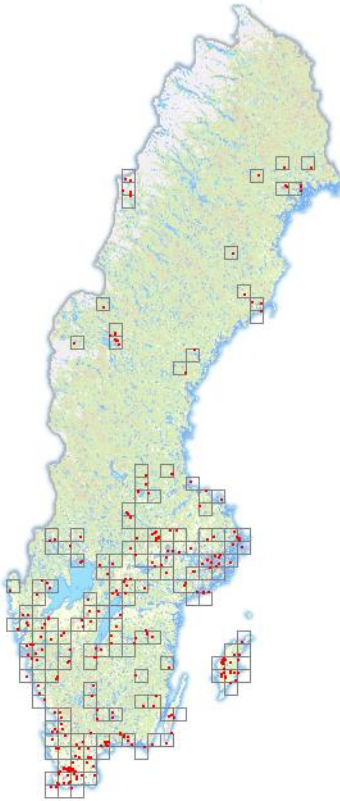


2011

- 54700 butterflies
- 203 volunteers
- 92 species



Improved coverage

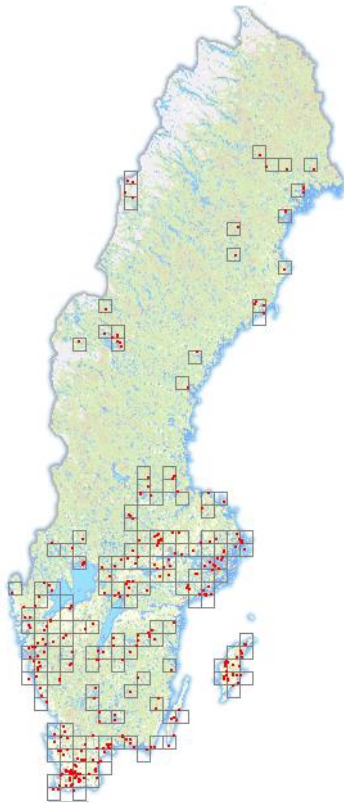


2012

- 51600 butterflies
- 254 volunteers
- 97 species



Improved coverage



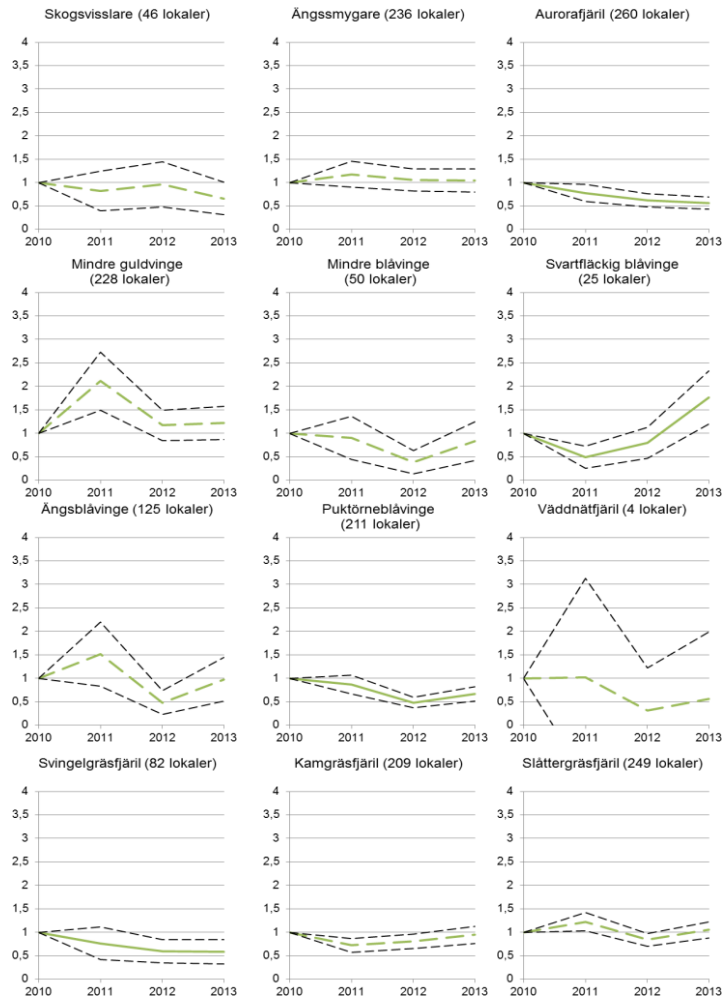
2013

- 66000 butterflies
- 269 volunteers
- 91 species



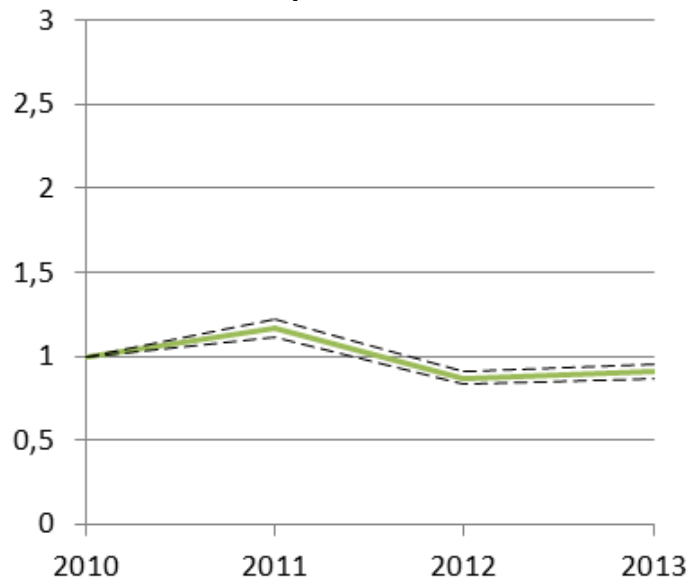
LUND
UNIVERSITY

Grassland Butterfly Indicator

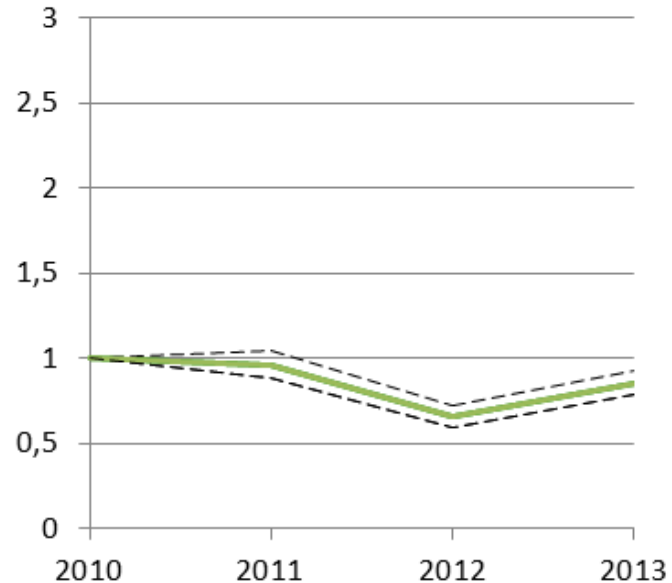


Nation-level indicators

20 most common
species



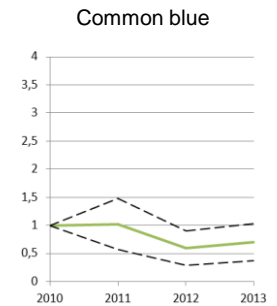
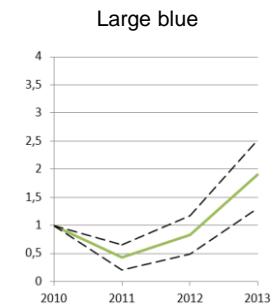
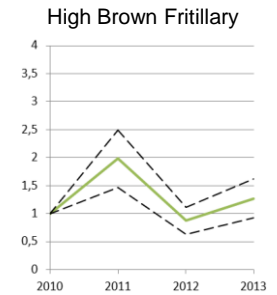
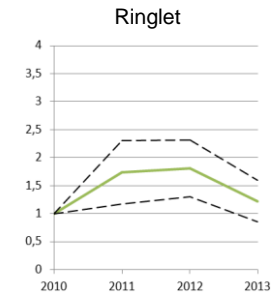
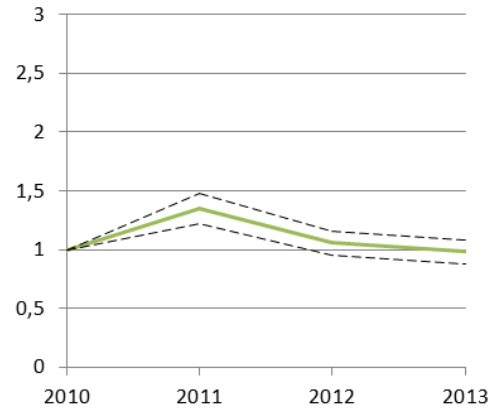
Grassland Butterfly
Indicator



...and regional-level indicators!



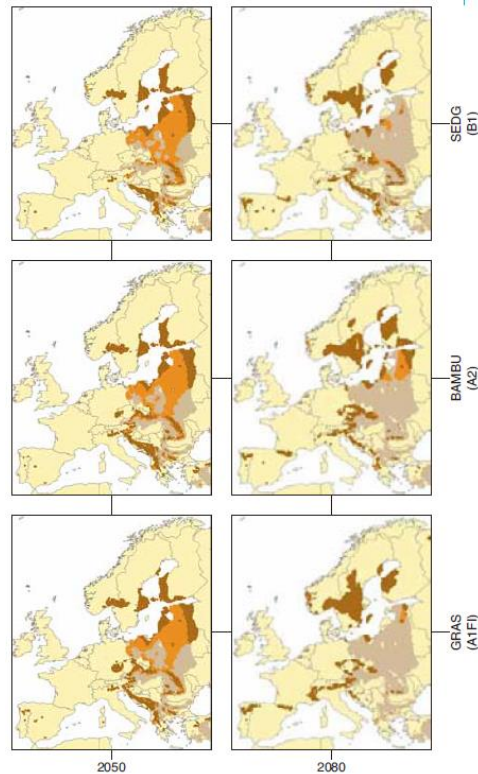
10 most common species on Gotland



Reports so far



Distribution changes



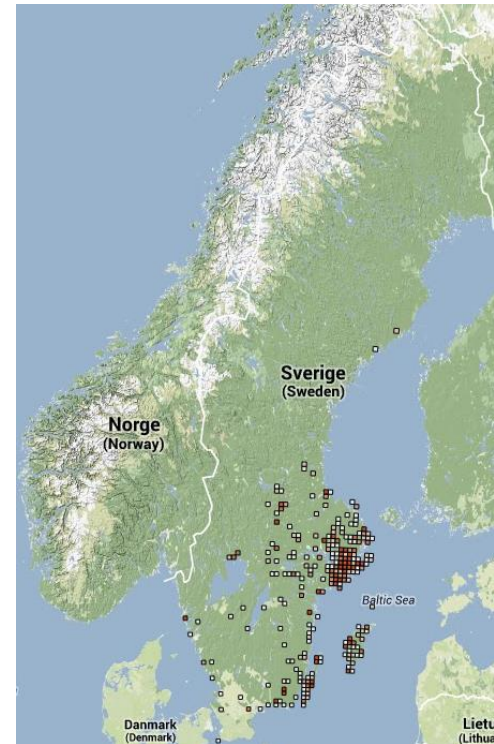
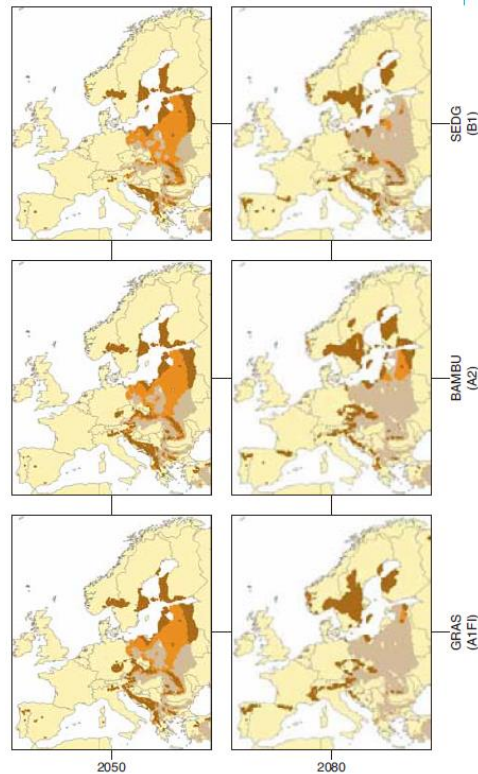
1900-2011

Yellowlegged tortoiseshell *Nymphalis xanthomelas*



LUND
UNIVERSITY

Distribution changes



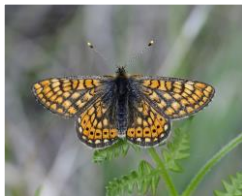
2012-2014

Yellowlegged tortoiseshell *Nymphalis xanthomelas*



LUND
UNIVERSITY

Habitats directive reporting



69

Reports 2007 & 2013, based on expert judgement

Habitats directive monitoring

- Initiated by the Swedish EPA
- Targeted & species-adaped
- Yearly counts
- Coordinated with other activities
 - The Swedish BMS
 - Species Action Plans
 - Local initiatives



Samladning av den biogeografiska uppdelningen av högläppta skärfjället (*Epilobium aureum*)

Inventeringsuppgdrag 2013 som grund för biogeografisk uppföljning av vattfåglig blävinge (*Macrolimna arion*)

Inventeringsuppgdrag 2013 som grund för biogeografisk uppföljning av biogeografisk blävinge (*Epilobium aureum*) i Skåneområdet

Inventeringsuppgdrag 2013 som grund för biogeografisk uppföljning av biogeografisk blävinge (*Epilobium aureum*) i Skåneområdet



The Swedish Red list



- New (2015) edition
- Some changes for butterflies and moths
- Most threat levels remain the same
- Web-based

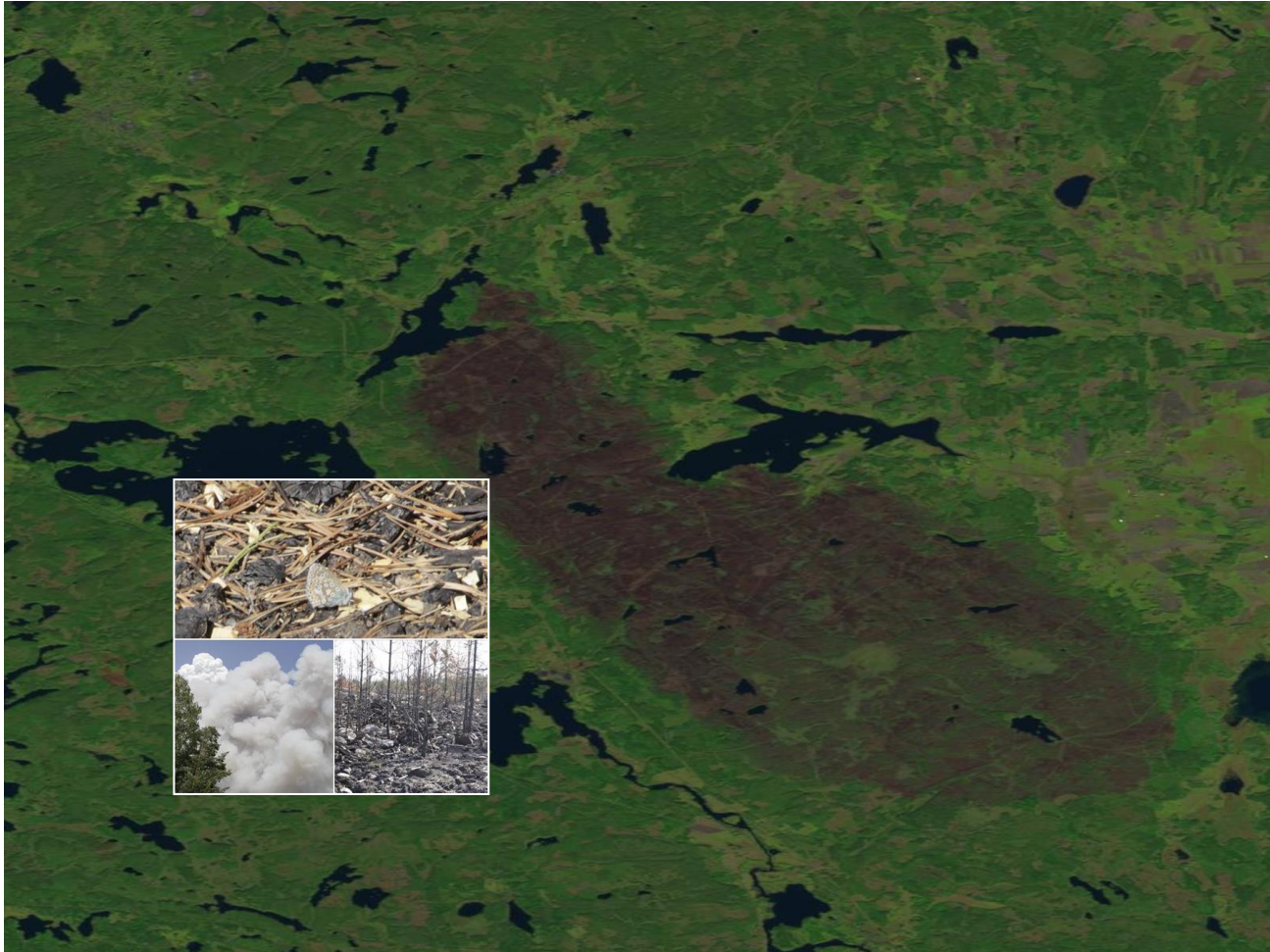


One more thing – Västmanland 2014



LUND
UNIVERSITY

One more thing – Västmanland 2014



Thank you!



SWEDISH BUTTERFLY MONITORING SCHEME

